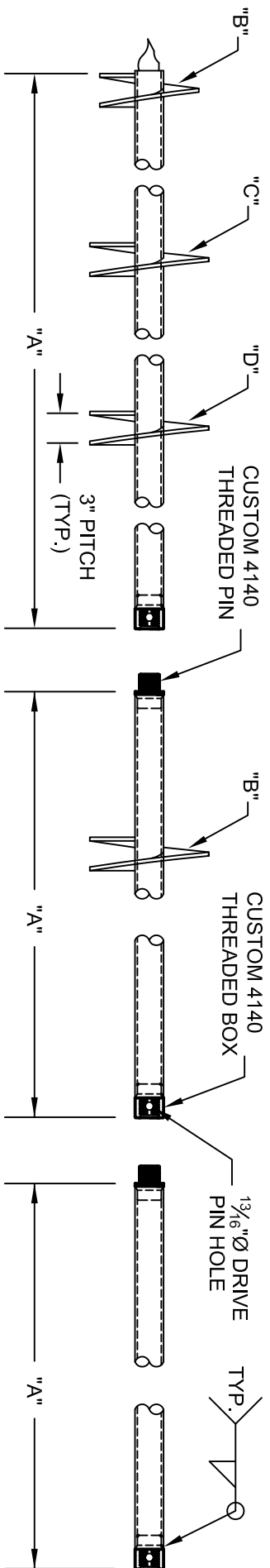


2 7/8" Ø HELICAL PILES AND ANCHORS - THREADED CONNECTION



LEAD SECTION

HELIX EXTENSION

EXTENSION

LEAD SECTION TABLE				
CAT. #	"A"	"B"	"C"	"D"
4368	5'-0"	10"	12"	
4370	7'-0"	10"	12"	
4367	7'-0"	14"	16"	
4362	5'-0"	8"	10"	
4050	7'-0"	12"	14"	
4371	7'-0"	10"	12"	14"
4360	5'-0"	8"	10"	12"
5280	10'-0"	6"	8"	

* MULTIPLE HELIX ARE SPACED 3 DIAMETERS OF THE LOWER HELIX.

HELIX EXTENSIONS	
CAT #	"A"
4385.12	5'-0"
4387.12	7'-0"
4385.14	5'-0"
4387.14	7'-0"

EXTENSIONS	
CAT #	"A"
4385	5'-0"
4387	7'-0"
4422	10'-0"

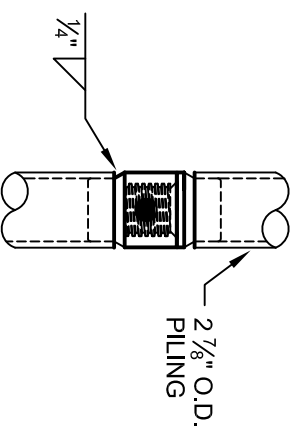
STRENGTH RATING

MAX. TORQUE STRENGTH - 8,200 FT-LB
 ULTIMATE CAPACITY (TENS/COMP) - 73.8 KIP*
 ALLOWABLE CAPACITY (TENS/COMP) - 36.9 KIP**

* BASED ON A TORQUE FACTOR (Kt) = 9
 ** W/ SAFETY FACTOR OF 2 BEING APPLIED
 *** RECOGNIZED BY ICC-ES IN ESR-1854

NOTES:

- POLYETHYLENE COPOLYMER THERMOPLASTIC COATING PER ICC-ES AC 228.
- LEAD AND EXTENSION SECTION AND PILOT POINT LENGTHS ARE NOMINAL. PILOT POINTS ARE 3".
- SHAFT MATERIAL IS 2 7/8" Ø, 0.217" WALL, MINIMUM Fy=65 KSI AND Fu=80 KSI.
- HELIX BLADE MATERIAL IS HOT ROLLED, MINIMUM Fy=50 KSI AND Fu=80 KSI CARBON STEEL. PLATE THICKNESS IS AVAILABLE IN 3/8" AND 1/2" THICKNESSES.
- CONNECTORS ARE 2 7/8" Ø, CUSTOM 4140 INTERNAL THREADED COUPLINGS
- NOMINAL SPACING BETWEEN HELICAL PLATES IS THREE TIMES THE DIAMETER OF THE LOWER HELIX.
- MANUFACTURER TO HAVE IN EFFECT INDUSTRY RECOGNIZED WRITTEN QUALITY CONTROL AND ASSURANCE FOR ALL MATERIALS AND MANUFACTURING PROCESSES.
- MANUFACTURER SHALL BE ISO CERTIFIED.
- ALL WELDING IS TO BE DONE BY WELDERS CERTIFIED UNDER SECTION 5 OF THE AWS CODE D1.1.
- RECOGNIZED BY ICC-ES IN ESR-1854. THE REPORTED ALLOWABLE CAPACITIES MAY VARY BASED ON THE SOIL CONDITION AND PILE APPLICATION AS DESCRIBED IN ESR-1854.



CONNECTION DETAIL



DWG. NO.: 2875.03	CATALOG NO.: SEE TABLES	REV. 1
SCALE: 3/4" = 1'-0"	DRAWN BY: DLW	DATE: 06/02/2013
SHEET 1 OF 1		